



Trusted Water Heater Specialists

Filter Change RO Water Purifier, MAX4



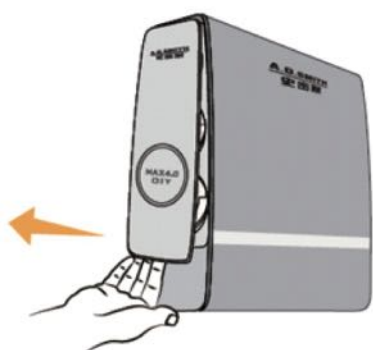
FILTER REPLACEMENT

RECOMMENDED FILTER REPLACEMENT CYCLE

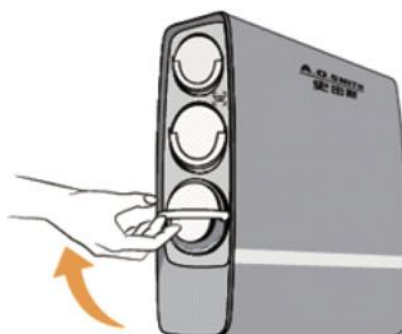
- The recommended filter replacement cycles of this water purifier are based on statistics of international average indicator.
- Local water quality and water consumption will affect the lifespan of each filter.
- If you notice a fault of blockage of the filter, please contact the authorised after-sales service department immediately.
- The filter lifespan is based on an estimation of ordinary household water consumption. The system is not designed to be installed in public places of high or commercial water consumption.

Filter	Particles removed	Estimated filter life	Model
Particle filter	Suspended solids, rust, sand, silt, organic matter, smells, prevents crystallization of calcium and magnesium ions in filtration system.	8-12 months	MT-4
Carbon filter	Removes odors, chlorine, chloramine and improves taste.	8-12 months	CMF
Reverse Osmosis (RO) membrane filter	0.0001 μ m precision filtration, removes viruses, bacteria, trace metals, heavy metal ions and pesticide residue.	40-48 months	TW-303-700

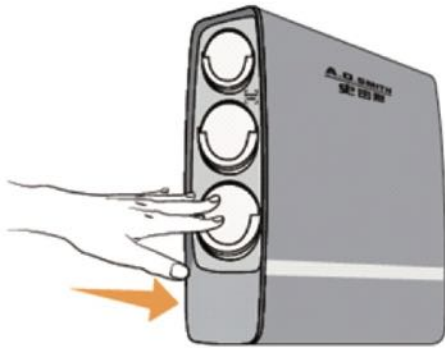
REPLACING THE FILTER



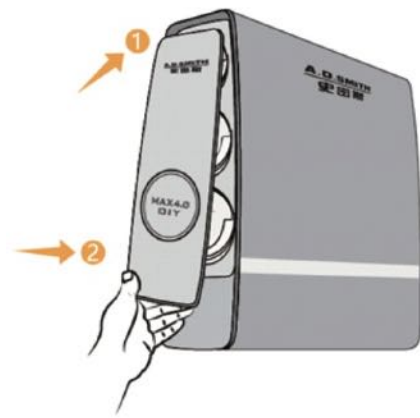
1. Do not disconnect power supply. Remove front cover and wait 1 minute for the system to depressurize. The light display will flash in this minute.



2. When the display stops flashing, raise the handle of the filter to a horizontal position. You will hear a click. Proceed to pull the filter out.



3. Remove all three filters. Replace affected filters, remember to remove all packaging. Insert all three filters back into the slots, ensuring you hear a click.



4. When successfully installed, the relevant filter indicator light display will turn white. Proceed to close the cover, aligning the magnets at the top first.

After replacing any of the filters, switch on the faucet and let the water run from the filter tap for 15 minutes before consuming the water.

NOTE:

1. If the filter indicator display does not light up in white, adjust the water purifier so that it is at least 2cm away from the sides of the housing cabinet. Then, remove the filter and reinstall it.
2. If the faucet stops dispensing water after any filter replacement, switch off the faucet and check that the filter is properly connected.